

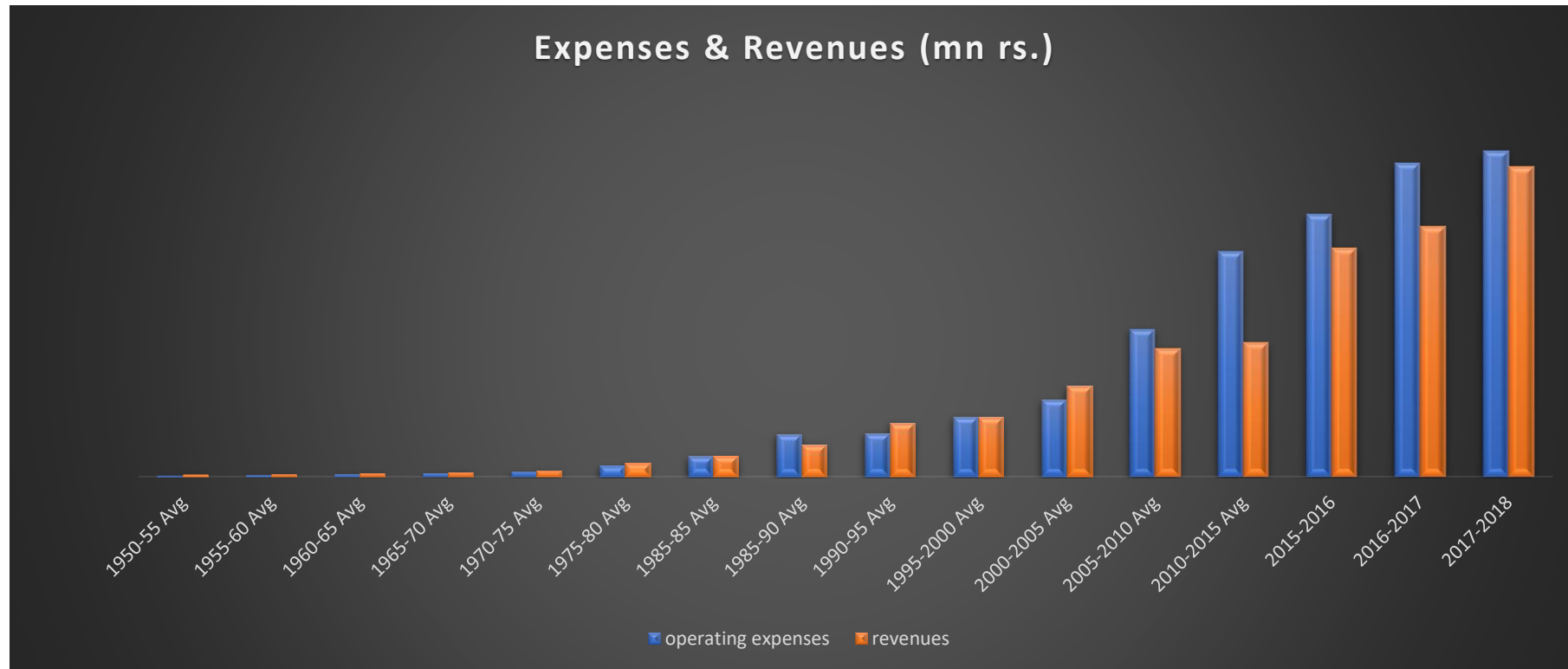
Reforming Pakistan Railways



Saba Anwar

Pakistan Institute of Development Economics (PIDE)

Why Reforms?



Government Footprint

67%

43%



is what the government directly controls in the economy; “decisions in these areas are dependent on the government.”

Continued...

Sector	Govt. Share in Sector (%)	Sector Share in Economy (%)	Govt. Share in Economy (%)
Agriculture	43.1	19.3	8.3
Manufacturing	11.9	12.5	1.5
Mining & Quarrying	79.6	2.5	2.0
Construction	75.0	2.5	1.9
Transport & Communication	73.4	12.3	9.0
Electricity Oil & Gas	77.6	1.8	1.4
Wholesale & Retail	7.9	18.2	1.4
Health & Education	49.3	6.5	3.2
Finance & Insurance	45.5	3.6	1.6
Other Services	60.0	20.8	12.5
Total		100	42.8

PIDE Sludge Series

Why Sludge Matters?

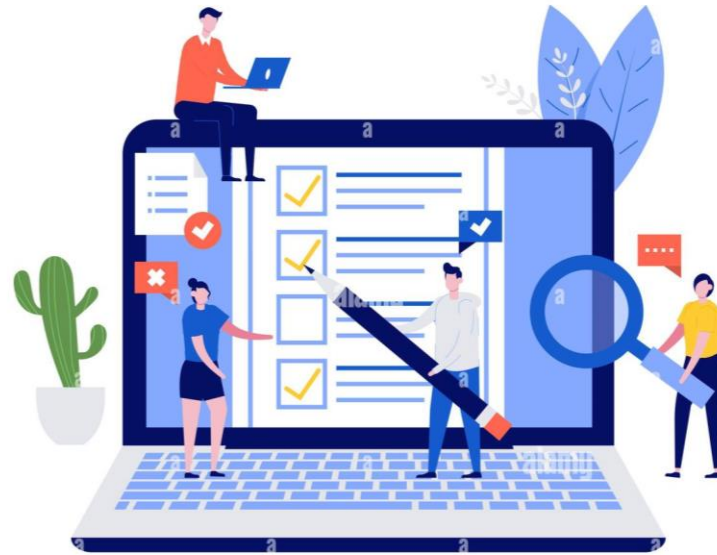
- Sludge impedes decision making by making it more difficult for people to navigate through their everyday lives.
- It imposes costs upon the economy in terms of waste of resources, and the opportunity costs incurred. This discourages investments, lowers productivity and therefore constrains GDP growth.
- It can be used to seek rents, which again constrains economy activity and GDP growth.
- It imposes psychological costs as well in the form of frustration, humility, and stigma.

Sludge in Freight

12
MILLION



Survey Findings



Political Interference

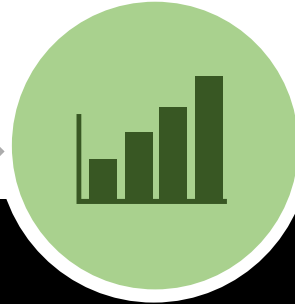
Poor Infrastructure of train/ engine and bogies

Lack of awareness/ information of schedule/ time and prices of commodities

Inefficiency /Unskilled labor increases risk

Slow Terminals and handling facilities.

Poor Punctuality and Reliability



Unavailability of rolling stock



Misplacement of consignments/s hipments



Mishandling of precious goods

Suggestions

Reliability of freight services and train infrastructure



Tracking system by booking number



Address Time Delays



Improve Human Capital



Trains should handle large shipment/ consignments. Small cargo should be handled by local vehicles



Introduce shuttle service for booking, and other process

Looking Forward

- End-to-end view of the total logistics chain and keen understanding of where rail services fit.
- Invest in detailed and disaggregated analysis of national freight flows to inform decisions about where to target interventions or public investment to ensure that the right freight flows on the right mode and maximizes efficient use of the entire transport and logistics network.



Thank You